

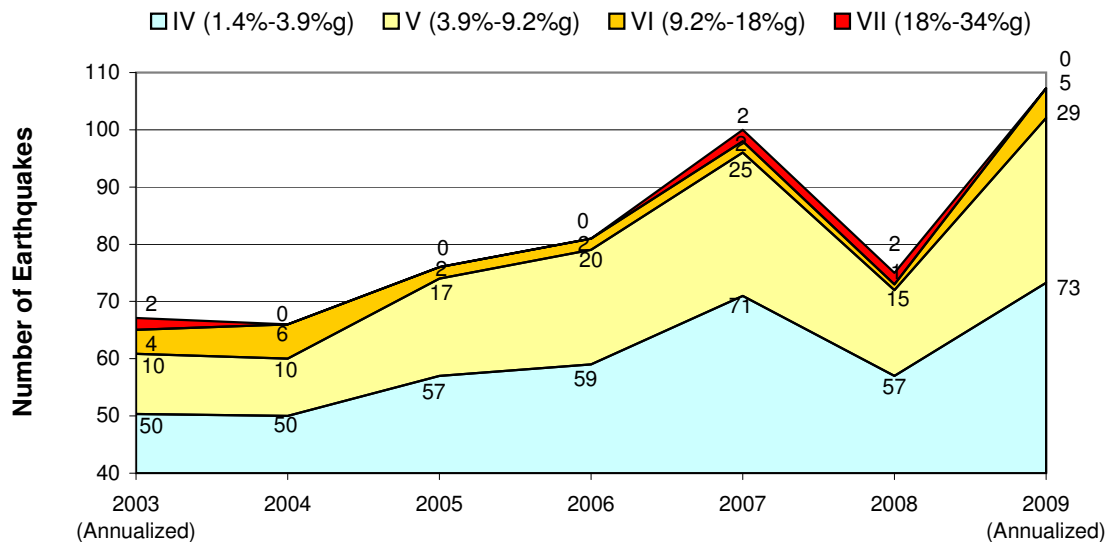
## SUMMARY BY YEAR & MODIFIED MERCALLI INTENSITIES (%g Peak Ground Acceleration)

512 Earthquakes Generating Strong Peak Ground Accelerations (PGA  $\geq$  1.4%g or Modified Mercalli Intensities IV+) Recorded in Anderson Springs over 76 Months (from July 11, 2003 through November 2, 2009)

Year	Modified Mercalli Intensity <sup>†</sup> (%g Peak Ground Acceleration)				Grand Total
	IV (1.4%-3.9%g)	V (3.9%-9.2%g)	VI (9.2%-18%g)	VII (18%-34%g)	
2003*	24	5	2	1	32
2003 (Annualized)	50	10	4	2	67
2004	50	10	6	0	66
2005	57	17	2	0	76
2006	59	20	2	0	81
2007	71	25	2	2	100
2008	57	15	1	2	75
2009 (Annualized)	73	29	5	0	107
2009*	56	22	4	0	82
<b>Grand Total</b>	<b>374</b>	<b>114</b>	<b>19</b>	<b>5</b>	<b>512</b>
	73%	22%	4%	1%	100%

\* Actual data for partial years: 2003 based on 7/11/03 through 12/31/03; 2009 based on 1/1/09 through 7/19/09, and 8/16/09 through 11/2/09). For comparison purposes charts use annualized data for 2003 and 2009.

### 512 Earthquakes Generating Strong Peak Ground Accelerations (PGA $\geq$ 1.4%g or Modified Mercalli Intensities IV+)



#### † Definitions of Modified Mercalli Intensity Scale (per USGS website)

**IV** = Felt indoors by many, outdoors by few during the day. At night, some awakened. Dishes, windows, doors disturbed; walls make cracking sound. Sensation like heavy truck striking building.

**V** = Felt by nearly everyone; many awakened. Some dishes, windows broken. Unstable objects overturned. Pendulum clocks may stop.

**VI** = Felt by all; many frightened. Some heavy furniture moved; a few instances of fallen plaster. Damage slight.

**VII** = Damage negligible in building of good design and construction; slight to moderate in well-built ordinary structures; considerable damage in poorly built or badly designed structures; some chimneys broken. Noticed by persons driving motor cars.

## SUMMARY BY YEAR & EARTHQUAKE MAGNITUDES

512 Earthquakes Generating Strong Peak Ground Accelerations (PGA ≥ 1.4%g or Modified Mercalli Intensities IV+) Recorded in Anderson Springs over 76 Months (from July 11, 2003 through November 2, 2009)

<b>YEAR</b>	<b>M0.0s</b>	<b>M1.0s</b>	<b>M2.0s</b>	<b>M3.0s</b>	<b>M4.0s</b>	<b>Grand Total</b>
<b>2003</b>	1	9	17	4	1	32
Average PGA (%g)	3.5%	1.8%	3.5%	10.0%	7.4%	4.0%
Maximum PGA (%g)	3.5%	3.1%	9.3%	23.6%	7.4%	23.6%
<b>2004</b>	0	20	38	7	1	66
Average PGA (%g)	N/A	2.0%	3.3%	7.0%	15.0%	3.5%
Maximum PGA (%g)	N/A	5.3%	13.5%	15.3%	15.0%	15.3%
<b>2005</b>	0	14	52	9	1	76
Average PGA (%g)	N/A	2.1%	3.1%	3.9%	13.2%	3.2%
Maximum PGA (%g)	N/A	3.5%	8.4%	10.4%	13.2%	13.2%
<b>2006</b>	0	17	44	18	2	81
Average PGA (%g)	N/A	2.5%	3.0%	5.4%	5.5%	3.5%
Maximum PGA (%g)	N/A	6.1%	6.9%	13.6%	9.1%	13.6%
<b>2007</b>	0	26	65	7	2	100
Average PGA (%g)	N/A	1.9%	3.7%	6.8%	4.5%	3.5%
Maximum PGA (%g)	N/A	3.9%	19.5%	20.2%	5.6%	20.2%
<b>2008</b>	0	16	51	6	2	75
Average PGA (%g)	N/A	2.1%	3.7%	7.0%	5.7%	3.7%
Maximum PGA (%g)	N/A	3.8%	19.0%	23.2%	7.8%	23.2%
<b>2009</b>	1	20	51	9	1	82
Average PGA (%g)	2.0%	2.4%	3.7%	4.2%	14.7%	3.5%
Maximum PGA (%g)	2.0%	5.6%	12.5%	8.2%	14.7%	14.7%
<b>GRAND TOTAL</b>	<b>2</b>	<b>122</b>	<b>318</b>	<b>60</b>	<b>10</b>	<b>512</b>
<b>% Total</b>	<b>0.4%</b>	<b>23.8%</b>	<b>62.1%</b>	<b>11.7%</b>	<b>2.0%</b>	<b>100.0%</b>
Average PGA (%g)	2.7%	2.1%	3.4%	5.8%	8.2%	3.5%
Maximum PGA (%g)	3.5%	6.1%	19.5%	23.6%	15.0%	23.6%

### Distribution of Earthquakes by Magnitude

■ M0.0s   
 ■ M1.0s   
 ■ M2.0s   
 ■ M3.0s   
 ■ M4.0s

